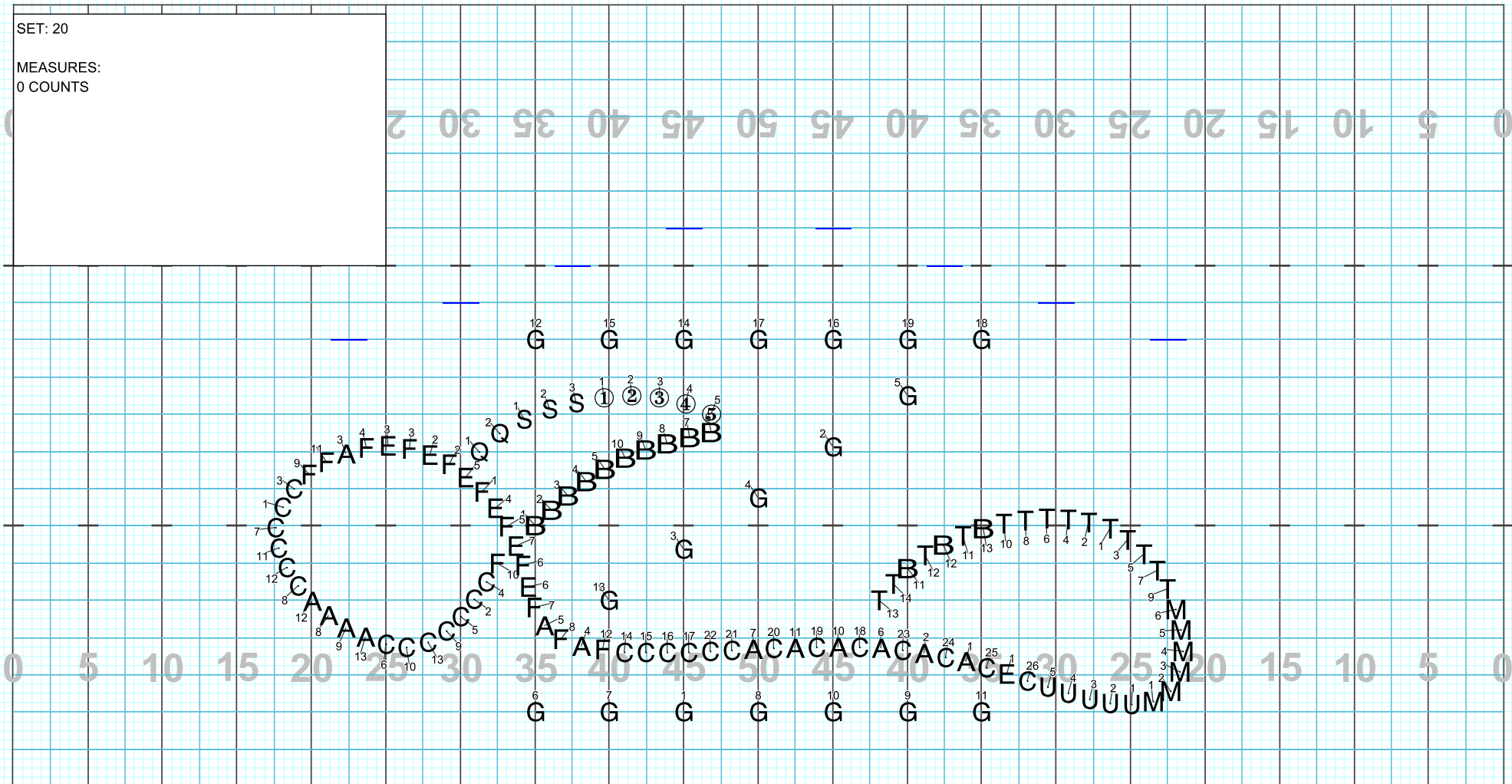


2024 GRAFTON PT2

Licensed to: Alan P. Johnson
Created on Pyware 3D.

SET: 20
MEASURES:
0 COUNTS

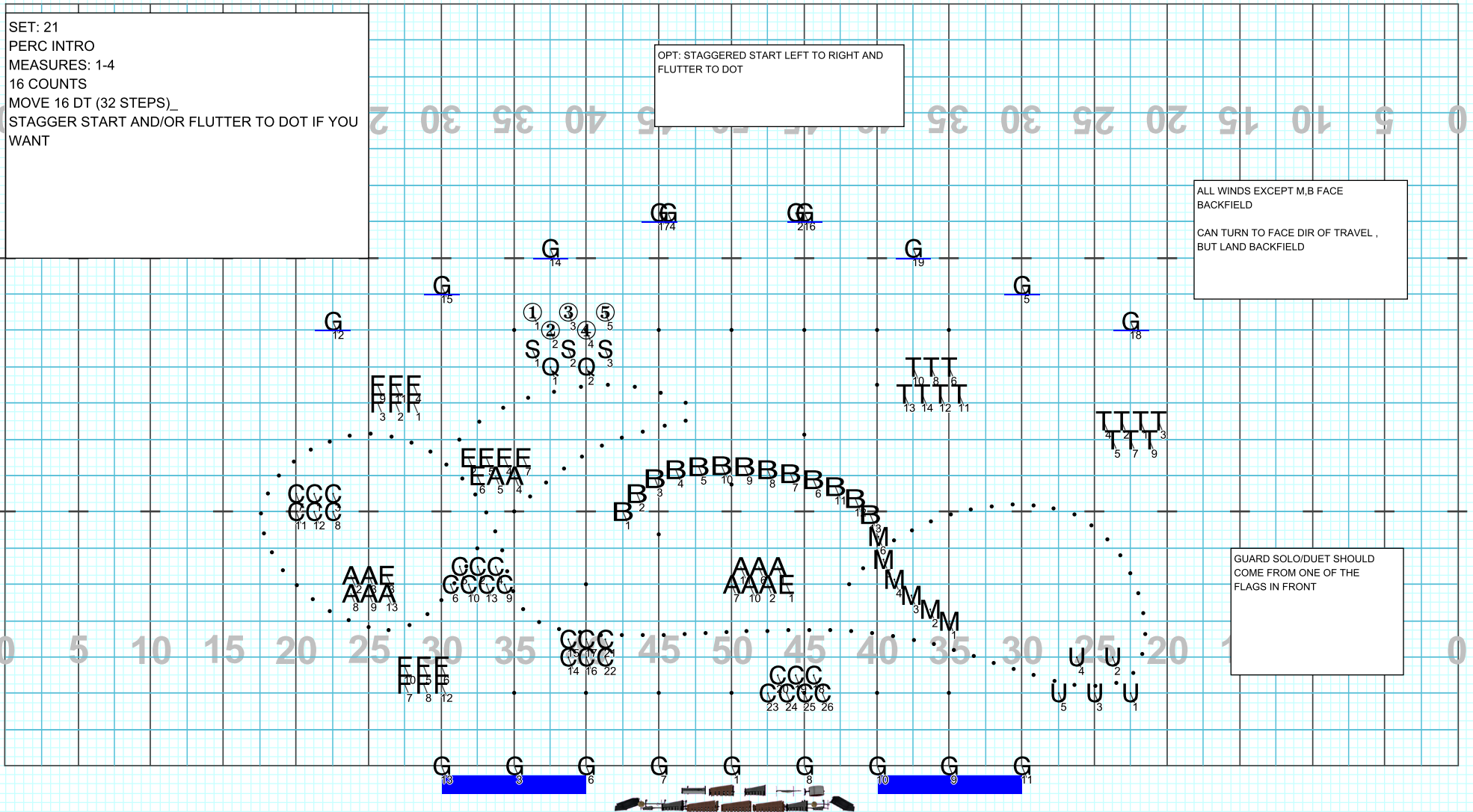


Director Viewpoint

Set #20 Counts: 0 Measures:

2024 GRAFTON PT2

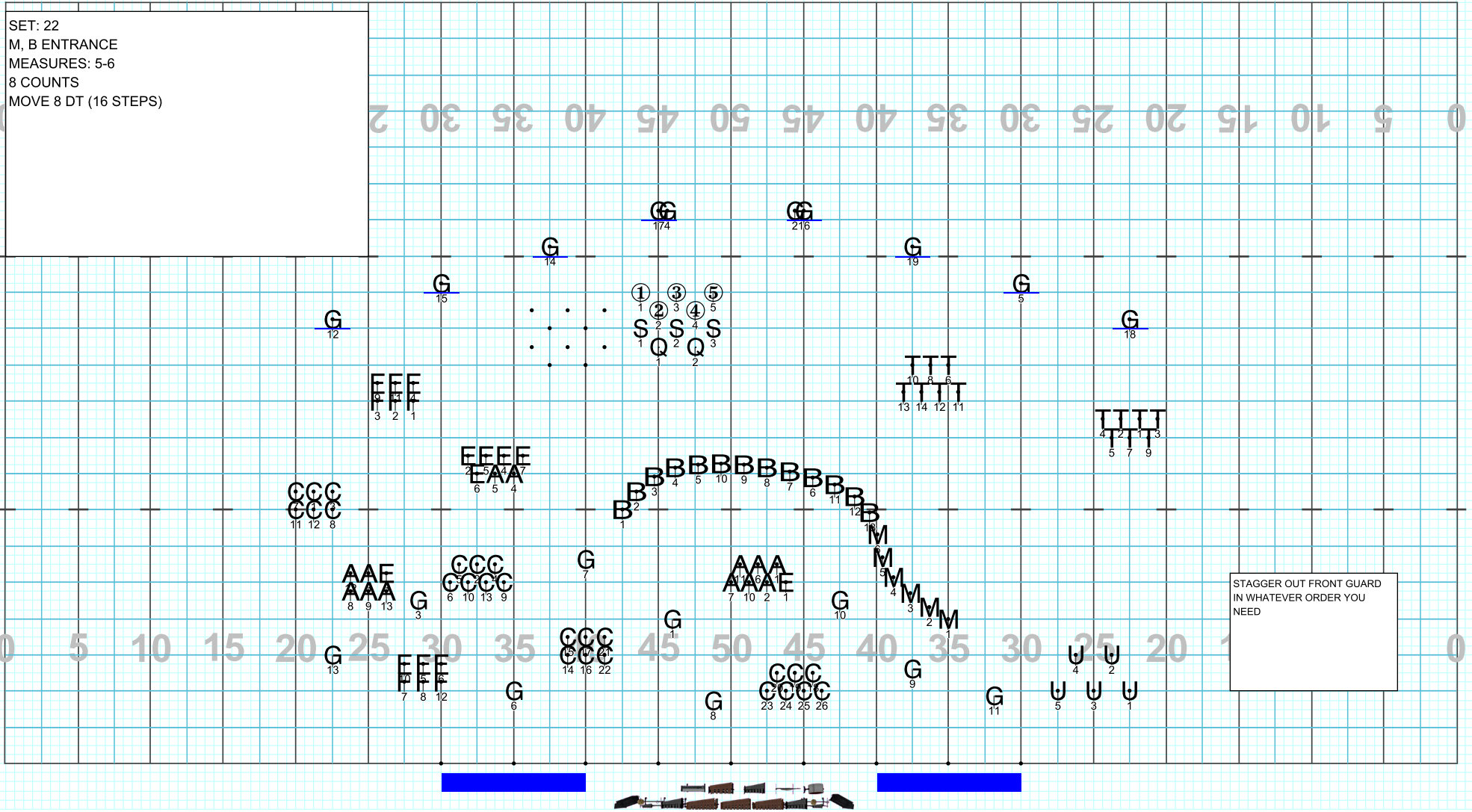
Licensed to: Alan P. Johnson
Created on Pyware 3D.



Set #21 Counts: 16 Measures: 1-4 PERC INTRO

2024 GRAFTON PT2

Licensed to: Alan P. Johnson
Created on Pyware 3D.

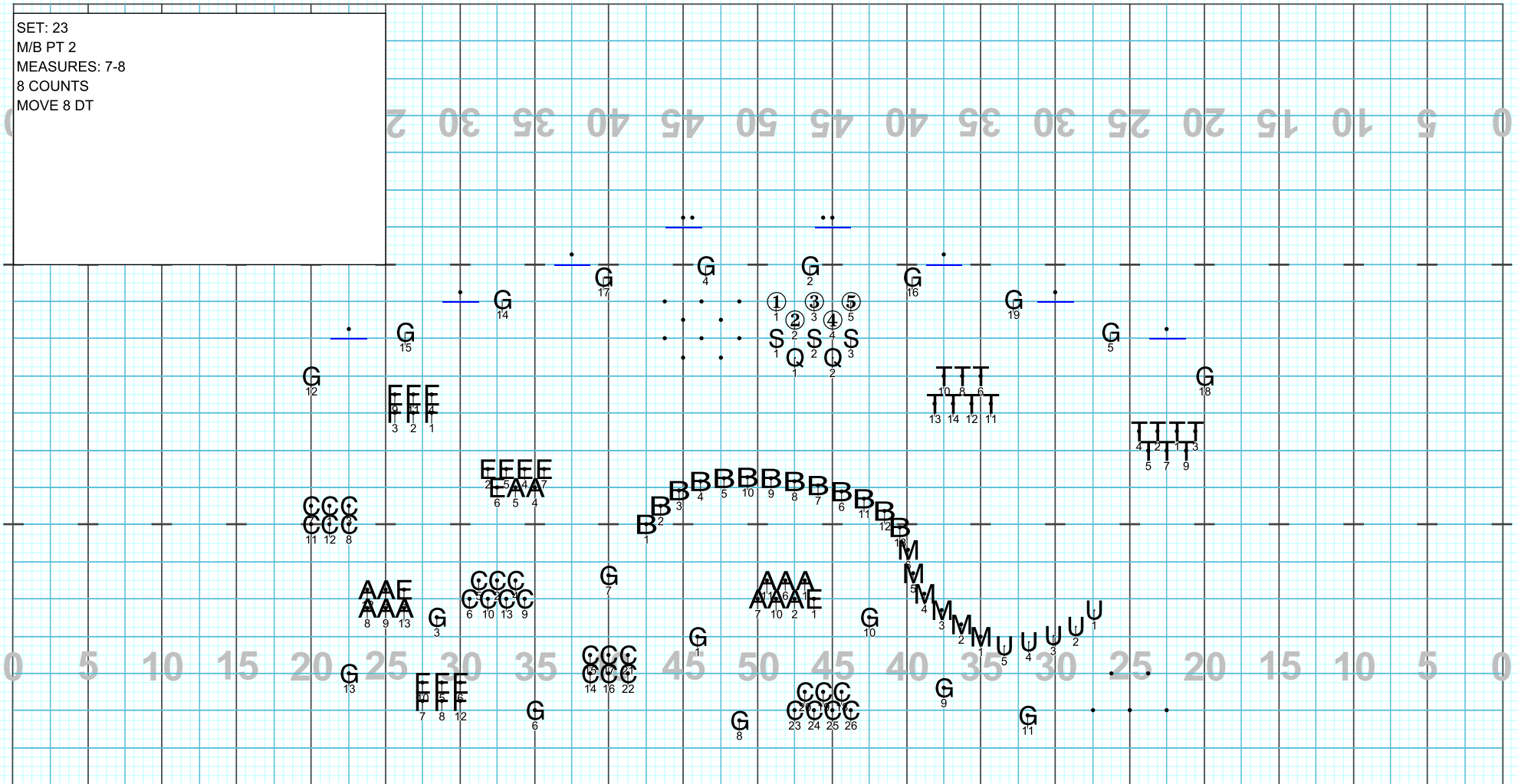


Set #22 Counts: 8 Measures: 5-6 M, B ENTRANCE

2024 GRAFTON PT2

Licensed to: Alan P. Johnson
Created on Pyware 3D.

SET: 23
M/B PT 2
MEASURES: 7-8
8 COUNTS
MOVE 8 DT



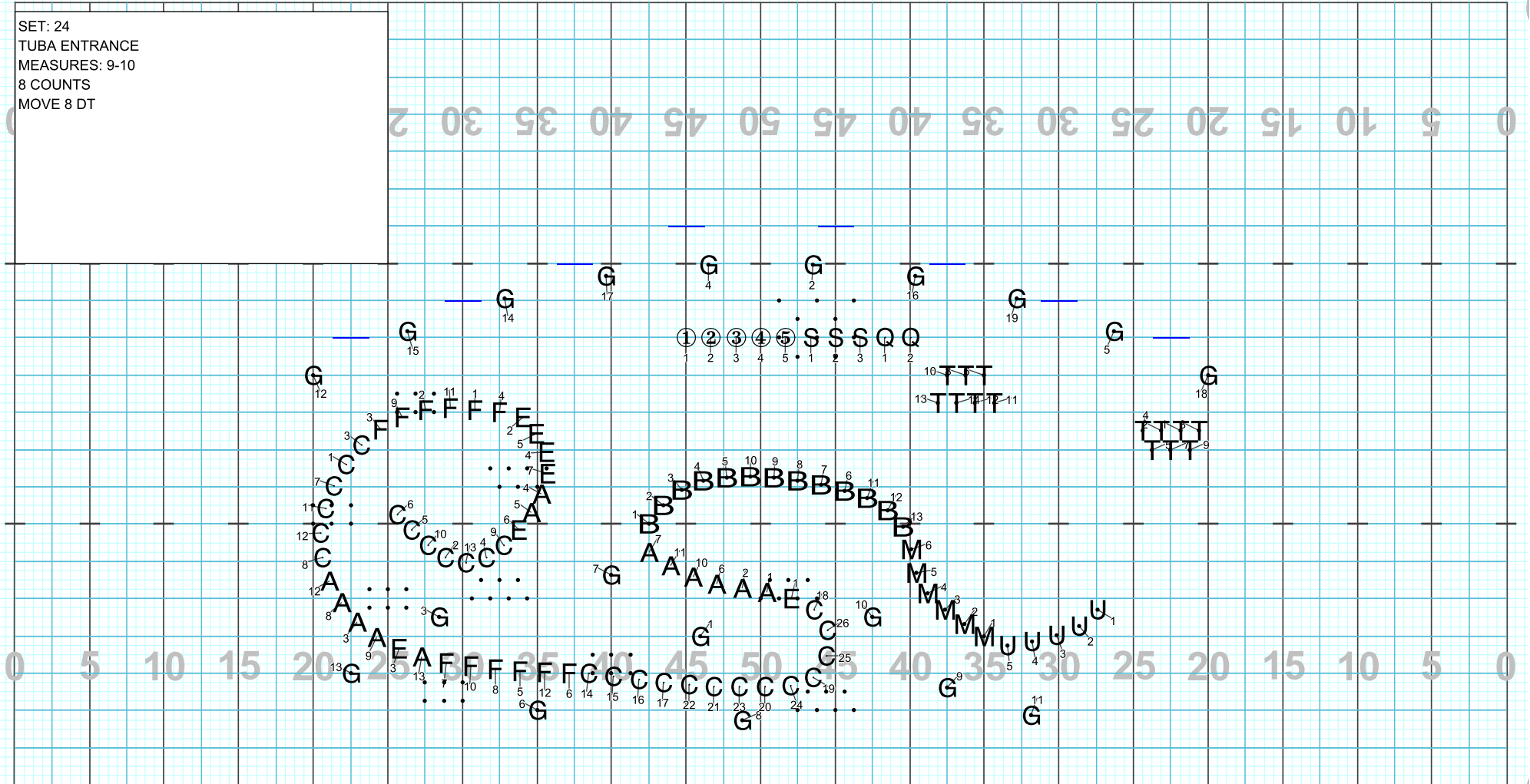
Director Viewpoint

Set #23 Counts: 8 Measures: 7-8 M/B PT 2

2024 GRAFTON PT2

Licensed to: Alan P. Johnson
Created on Pyware 3D.

SET: 24
TUBA ENTRANCE
MEASURES: 9-10
8 COUNTS
MOVE 8 DT



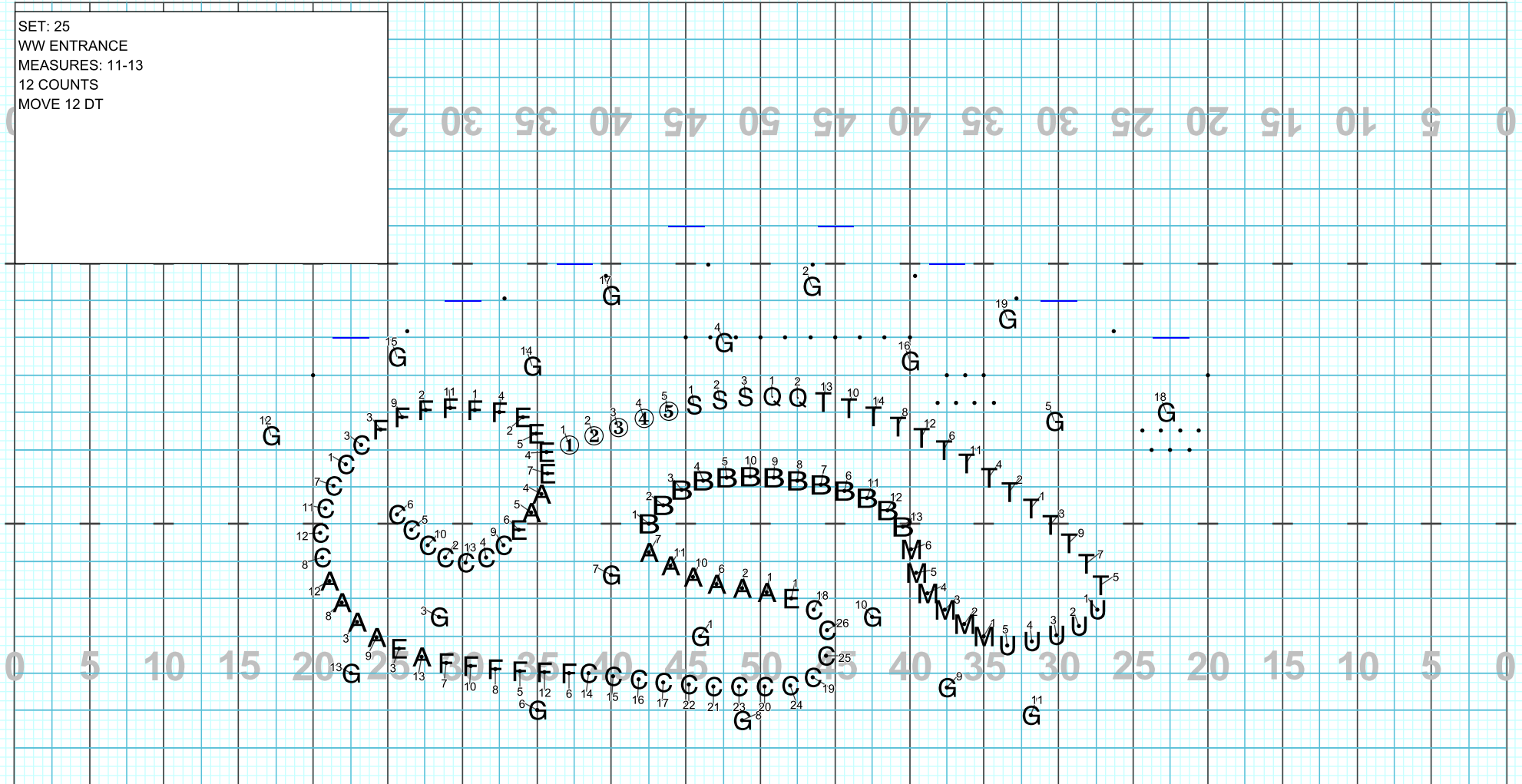
Director Viewpoint

Set #24 Counts: 8 Measures: 9-10 TUBA ENTRANCE

2024 GRAFTON PT2

Licensed to: Alan P. Johnson
Created on Pyware 3D.

SET: 25
WW ENTRANCE
MEASURES: 11-13
12 COUNTS
MOVE 12 DT



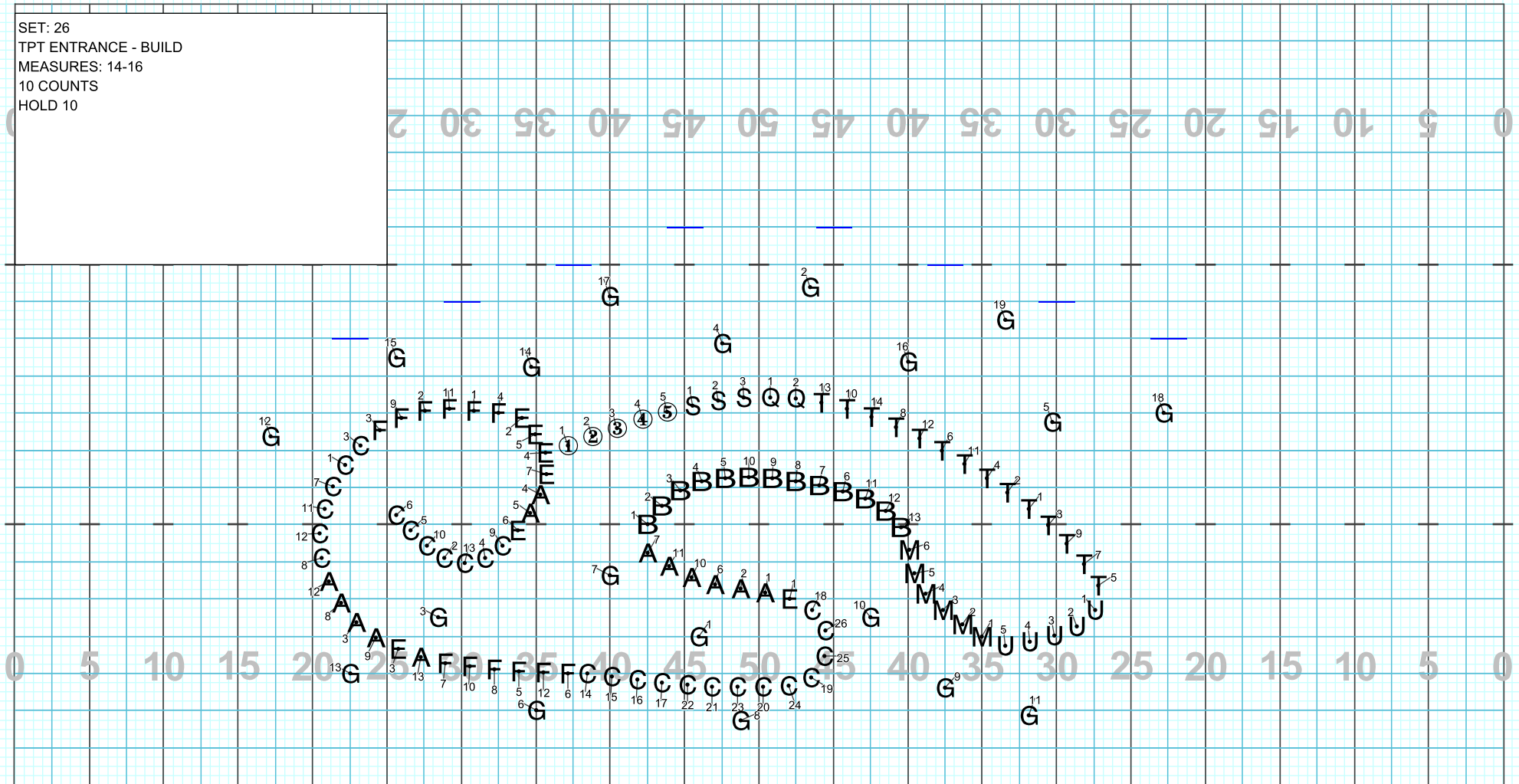
Director Viewpoint

Set #25 Counts: 12 Measures: 11-13 WW ENTRANCE

2024 GRAFTON PT2

Licensed to: Alan P. Johnson
Created on Pyware 3D.

SET: 26
TPT ENTRANCE - BUILD
MEASURES: 14-16
10 COUNTS
HOLD 10



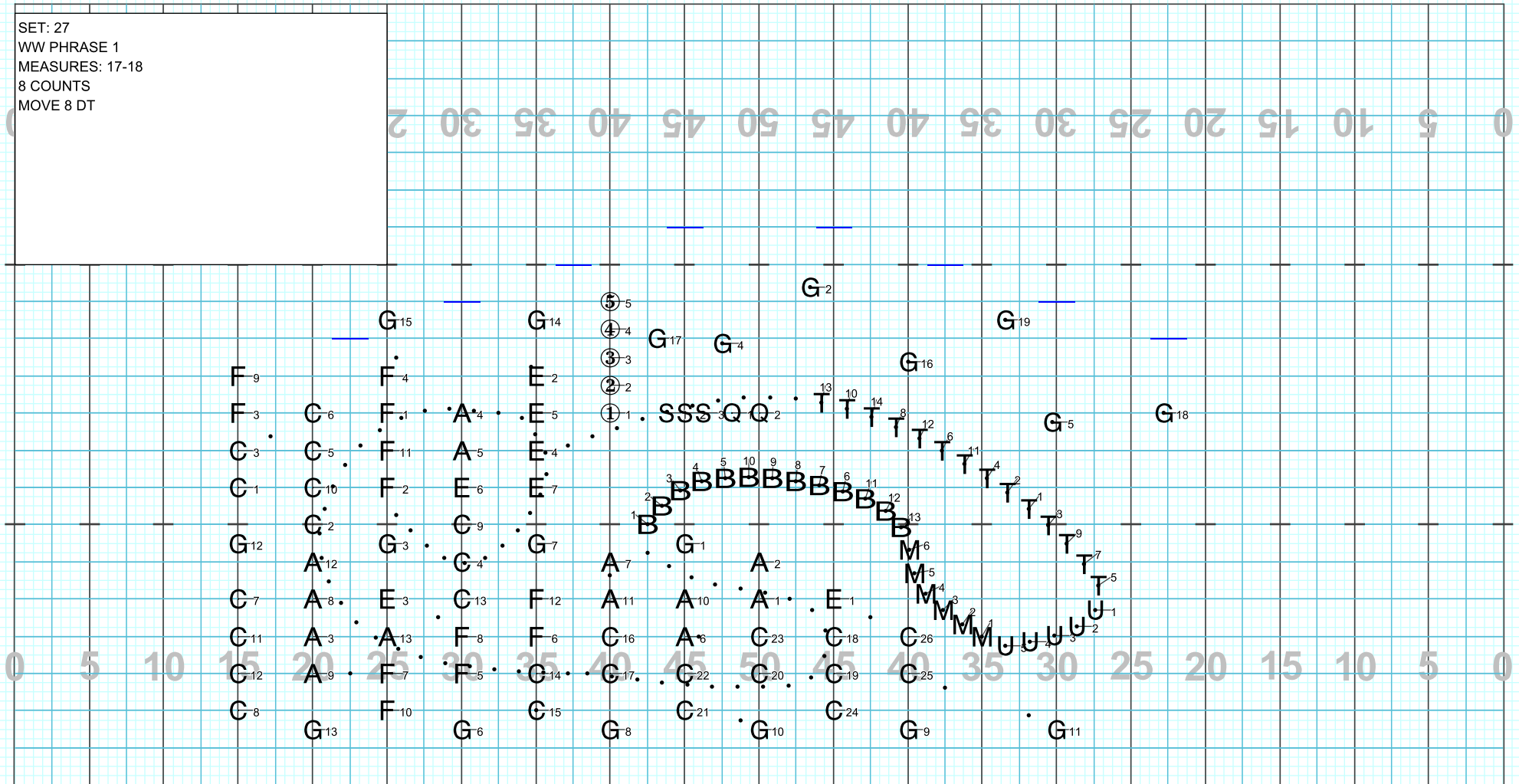
Director Viewpoint

Set #26 Counts: 10 Measures: 14-16 TPT ENTRANCE - BUILD

2024 GRAFTON PT2

Licensed to: Alan P. Johnson
Created on Pyware 3D.

SET: 27
WW PHRASE 1
MEASURES: 17-18
8 COUNTS
MOVE 8 DT



Director Viewpoint

Set #27 Counts: 8 Measures: 17-18

WW PHRASE 1

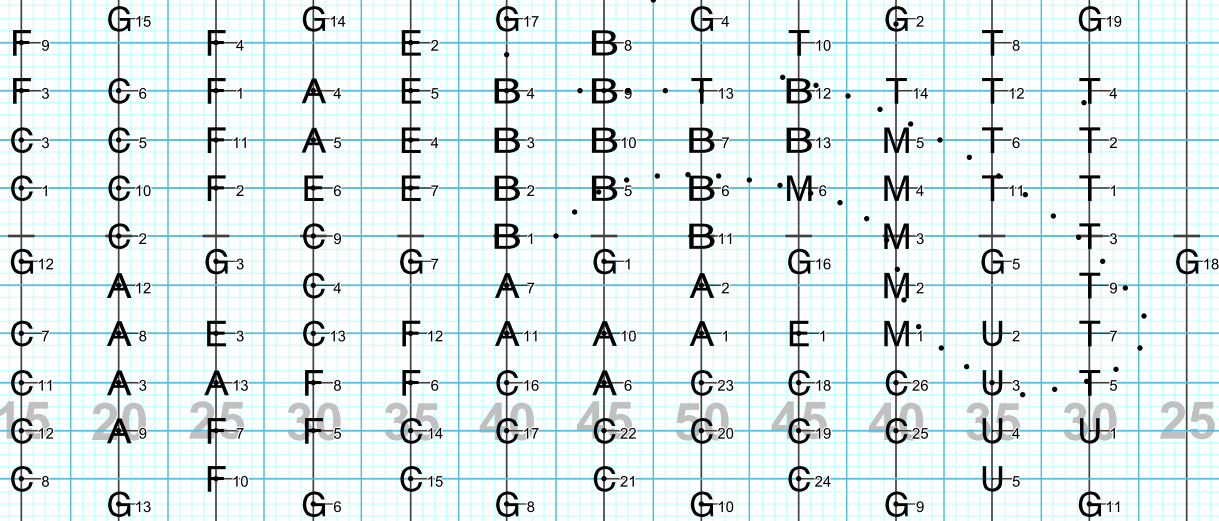
2024 GRAFTON PT2

Licensed to: Alan P. Johnson
Created on Pyware 3D.

SET: 28
WW PHRASE AND BUILD
MEASURES: 19-21
12 COUNTS
MOVE 12 DT

G 15 - GO B/W BD AND
SNARES

⑤ ④ ③ ② ① SSS Q Q
5 4 3 2 1 2 3 1 2



Director Viewpoint

Set #28 Counts: 12 Measures: 19-21

WW PHRASE AND BUILD

2024 GRAFTON PT2

Licensed to: Alan P. Johnson
Created on Pyware 3D.

SET: 29

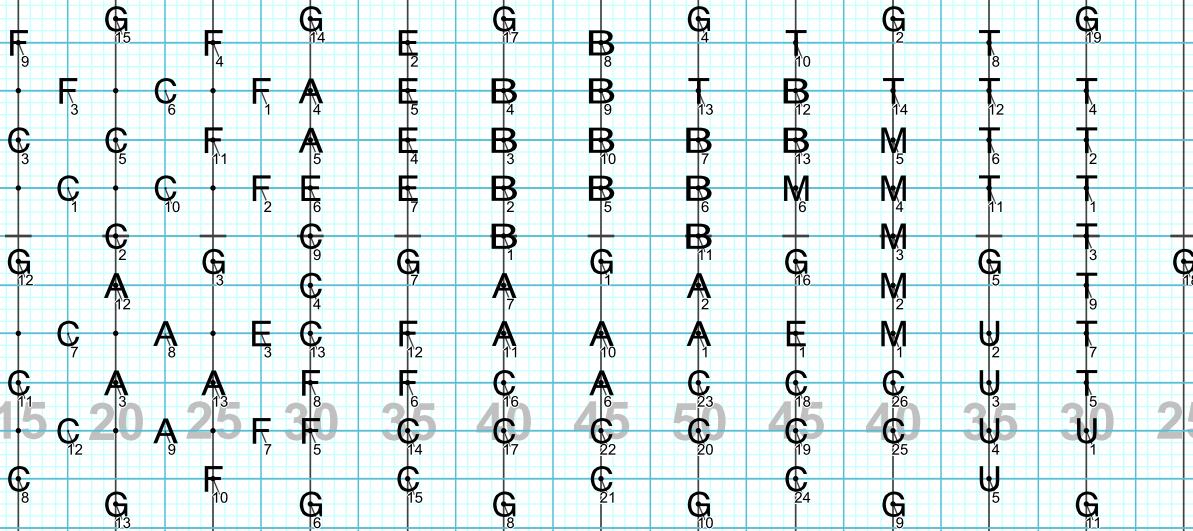
MEASURES: 22
4 COUNTS
MOVE 4
LETTER K

DRUMS MOVE FEET IN DOUBLE TIME TO KEEP PULSE (SMALL STEPS)

GUARD - THESE 4 SETS AS BAND NEAR YOU MOVES. MAYBE SEQUENTIALLY OPEN UP TO DOUBLE SWINGS BUT KEEP WORK LOW AND W/ ONE FLAG AT A TIME?

SO THIS SET G 11,14,12,13 DO TO DOUBLE

⑤ ④ ③ ② ① SSS Q Q
5 4 3 2 1 1 2 3 1 2



Director Viewpoint

Set #29 Counts: 4 Measures: 22

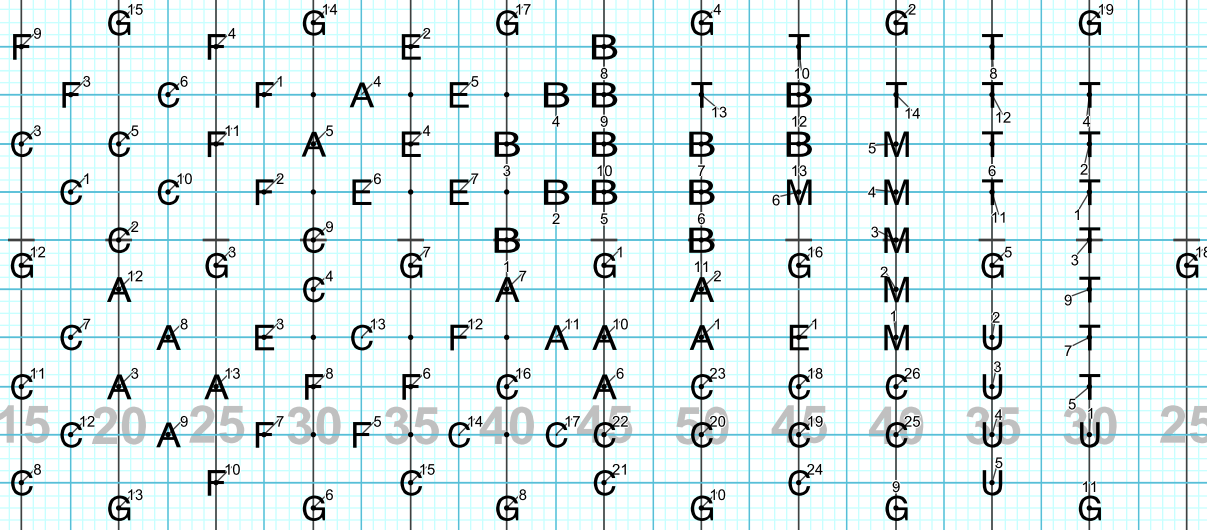
2024 GRAFTON PT2

SET: 30

MEASURES: 23
4 COUNTS
MOVE 4

0 5 10 15 20 25 30 35 40 45 50 45 40 35 30 25 20 15 10 5 0

5 4 3 2 1 S S S Q Q



THIS SET G6, 16,2,14,1
GO TO DOUBLE



Director Viewpoint

Set #30 Counts: 4 Measures: 23

2024 GRAFTON PT2

SET: 31

MEASURES: 24
4 COUNTS
MOVE 4

0 5 10 15 20 25 30 35 40 45 50 45 40 35 30 25 20 15 10 5 0

• ⑤ ④ ③ ② ① SSS Q Q
5 4 3 2 1 1 2 3 1 2

THIS SET 7,4,8,18 GO
TO DOUBLE

0 5 10 15 20 25 30 35 40 45 50 45 40 35 30 25 20 15 10 5 0



Director Viewpoint

Set #31 Counts: 4 Measures: 24

2024 GRAFTON PT2

Licensed to: Alan P. Johnson
Created on Pyware 3D.

SET: 32

MEASURES: 25
4 COUNTS
MOVE 4

0 5 10 15 20 25 30 35 40 45 50 45 40 35 30 25 20 15 10 5 0

5 4 3 2 1 2 3 1 2 Q Q

ALL G DOUBLE

0 5 10 15 20 25 30 35 40 45 50 45 40 35 30 25 20 15 10 5 0

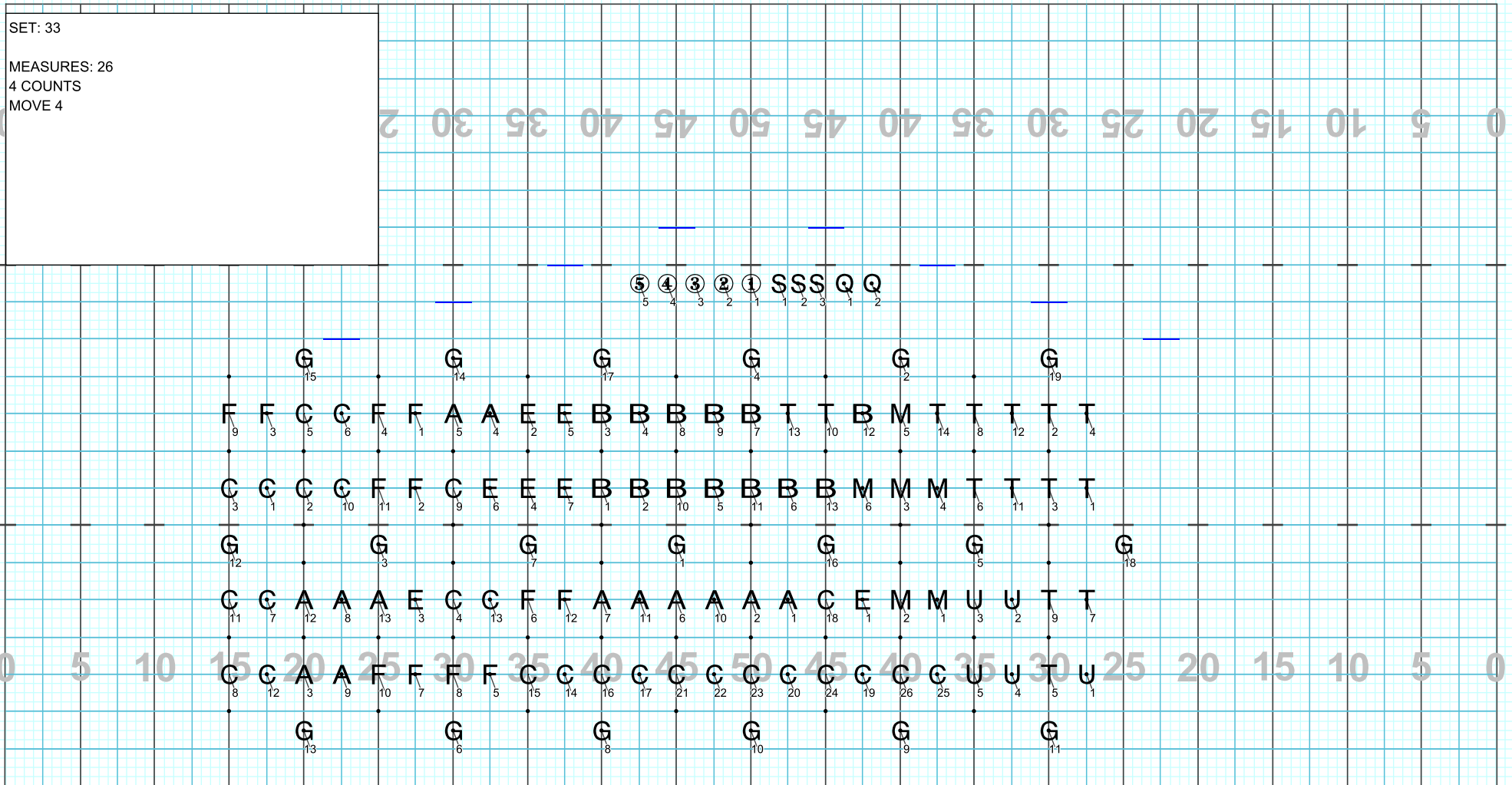


Director Viewpoint

Set #32 Counts: 4 Measures: 25

2024 GRAFTON PT2

Licensed to: Alan P. Johnson
Created on Pyware 3D.



Director Viewpoint

Set #33 Counts: 4 Measures: 26

2024 GRAFTON PT2

Licensed to: Alan P. Johnson
Created on Pyware 3D.

SET: 34
MEASURES: 27-30
14 COUNTS
HOLD 14

0 5 10 15 20 25 30 35 40 45 50 45 40 35 30 25 20 15 10 5 0

⑤ ④ ③ ② ① SSS Q Q
5 4 3 2 1 1 2 3 1 2

EASY LYRICAL BODY THAT PROBABLY GOES CONTRARY (EACH ROW A DIFFERENT WAY) OR SEQUENTIAL FRONT TO BACK?
TURN BACKFIELD DURING 2 COUNTS OF SILENCE (EXCEPT SOLOISTS!)

G₁₅ G₁₄ G₁₇ G₄ G₁₂ G₁₉
 F₉ F₃ C₅ C₆ F₄ F₁ A₅ A₄ E₂ E₅ B₃ B₄ B₈ B₉ B₇ T₁₃ T₁₀ B₁₂ M₅ T₁₄ T₈ T₁₂ T₂ T₄
 C₃ C₁ C₂ C₁₀ F₁₁ F₂ C₉ E₆ E₄ E₇ B₁ B₂ B₁₀ B₅ B₁₁ B₆ B₁₃ M₃ M₄ M₆ T₁₁ T₃ T₁
 G₁₂ G₃ G₇ G₁ G₁₆ G₅ G₁₈
 C₁₁ C₇ A₁₂ A₈ A₁₃ E₃ C₄ C₁₃ F₆ F₁₂ A₇ A₁₁ A₆ A₁₀ A₂ A₁ C₁₈ E₁ M₂ M₁ U₃ U₂ T₉ T₇
 C₈ C₁₂ A₃ A₉ F₁₀ F₇ F₈ F₅ C₁₅ C₁₄ C₁₆ C₁₇ C₂₁ C₂₂ C₂₃ C₂₀ C₂₄ C₁₉ C₂₆ C₂₅ U₅ U₄ T₅ U₁
 G₁₃ G₆ G₈ G₁₀ G₉ G₁₁



Director Viewpoint

Set #34 Counts: 14 Measures: 27-30

2024 GRAFTON PT2

Licensed to: Alan P. Johnson
Created on Pyware 3D.

SET: 35

MEASURES: 31-33, 34-35
12 COUNTS
MOVE 12 DT (24 STEPS) THEN HOLD UNTIL END
OPT: STAGGER START AND/OR FLUTTER HERE IF NOT PLAYING

SOLOISTS = T5, M1

GUARD SOLO/DUET SHOULD COME FROM:
18, 5, 19

COULD ALSO JUST BE NO SOLO AND RIPPLE
OUT RIGHT TO LEFT OR LEFT TO RIGHT

COULD ALSO BE 8,9,10 DEPENDING ON HOW
FAST YOU WANT WEAPONS SPINNING

MELLO, LOW BRASS PATHS WILL
TAKE SOME TIME TO WORK OUT
HERE, BUT ITS MANAGEABLE FOR
SURE

Set #35 Counts: 12 Measures: 31-33, 34-35

Director Viewpoint